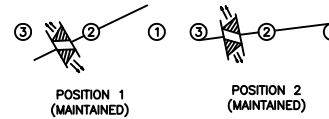


**SCHEMATIC**



**SPECIFICATIONS**

**FUNCTION:**  
1P1T OFF-ON

**RATINGS:**  
ANSI/UL 1054  
20A 125VAC [cURus]  
16A 250VAC [cURus]  
3/4HP 125/250VAC [cURus]

**ENEC/VDE**  
16(4)A 250V~ 1E4 T85/55 [ENEC10, VDE]  
10(2)A 250V~ 5E4 T85/55 [ENEC10, VDE]  
20(8)A 250V~ 1E4 T125/55 [ENEC10, VDE]

**ILLUMINATION VOLTAGE:**  
6V

**CONTACT RESISTANCE:**  
Initial: 20mΩ Max.

**INSULATION RESISTANCE:**  
100MΩ Min. at 500VDC

**DIELECTRIC STRENGTH:**  
1,000VAC for 1 Minute

**ELECTRICAL LIFE:**  
6,000 Cycles [cURus]  
10,000 Cycles [ENEC10, VDE: 16(4)A 250V~]  
50,000 Cycles [ENEC10, VDE: 10(2)A 250V~]

**TEMPERATURE:**  
Operating: -20°C to 105°C [cURus]  
Operating: -20°C to 85°C [ENEC10, VDE: 16(4)A 250V~]  
Operating: -20°C to 125°C [ENEC10, VDE: 20(8)A 250V~]

**APPROVALS:**



**MATERIALS**

**BODY:**  
Polyamide 6/6 (PA66), UL94 V-2

**ACTUATOR:**  
Polycarbonate (PC), UL94 V-2

**LAMP CARRIER:**  
Polyamide 6/6 (PA66), UL94 V-2

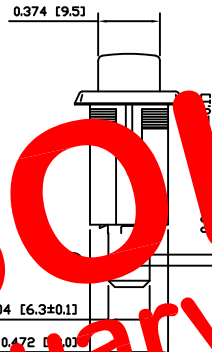
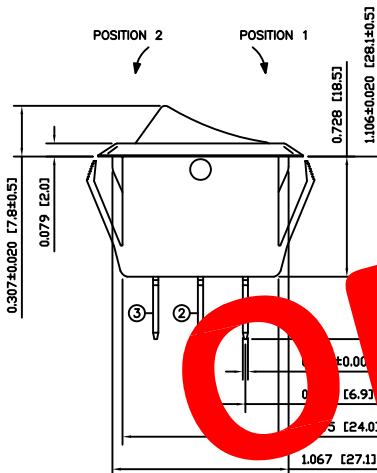
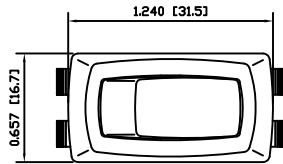
**LAMP:**  
LED

**LAMP SPRING:**  
Steel

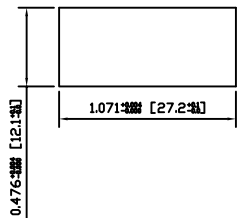
**SPRING:**  
Steel

**CONTACTS:**  
Silver Plated Copper

**TERMINALS:**  
Silver Plated Copper  
Silver Plated Brass



**SUGGESTED PANEL CUTOUT**



**OBSOLETE**  
 January 2018  
 PCR 23171

ACTUATOR	A	09/08/13	CAB
BODY	B	10/05/10	CAB
SPECIFICATIONS			
REFERENCE	REV.	DATE	BY

THE INFORMATION CONTAINED IN THIS DOCUMENT IS PROPRIETARY TO E-SWITCH AND IS NOT TO BE COPIED OR TRANSFERRED

B	LAMP FROM INCAND. BULB TO LED, UPDATE SCHEM. AND SPEC.	21828	06/15/15	MW
A	INITIAL RELEASE	20276	11/10/11	BMA
REV.	DESCRIPTION	PCR	DATE	DRAWN BY

DIMENSIONS	
INCHES [MILLIMETERS]	
GENERAL TOLERANCES	
±0.008 [±0.2] / ±1'	
SCALE	PROJECTION
DRAWING NOT TO SCALE	1 <sup>st</sup> ANGLE

TITLE			
RSC241D1021-133			
ITEM NUMBER	DATE	REVISION	
14-RSC241D1021133	NOVEMBER 10, 2011	B	